



MaxiMix QuickChill AutoChef 86

Technical data

10000035861-TDA-000-00



The appliance can be shown with some accessory on the photo.

The control can be mounted either to the right or to the left of the kettle.

Kettles from the same model can be combined in pairs. The control is mounted in the outer pillars.

The kettle is build for chilling with ice water.

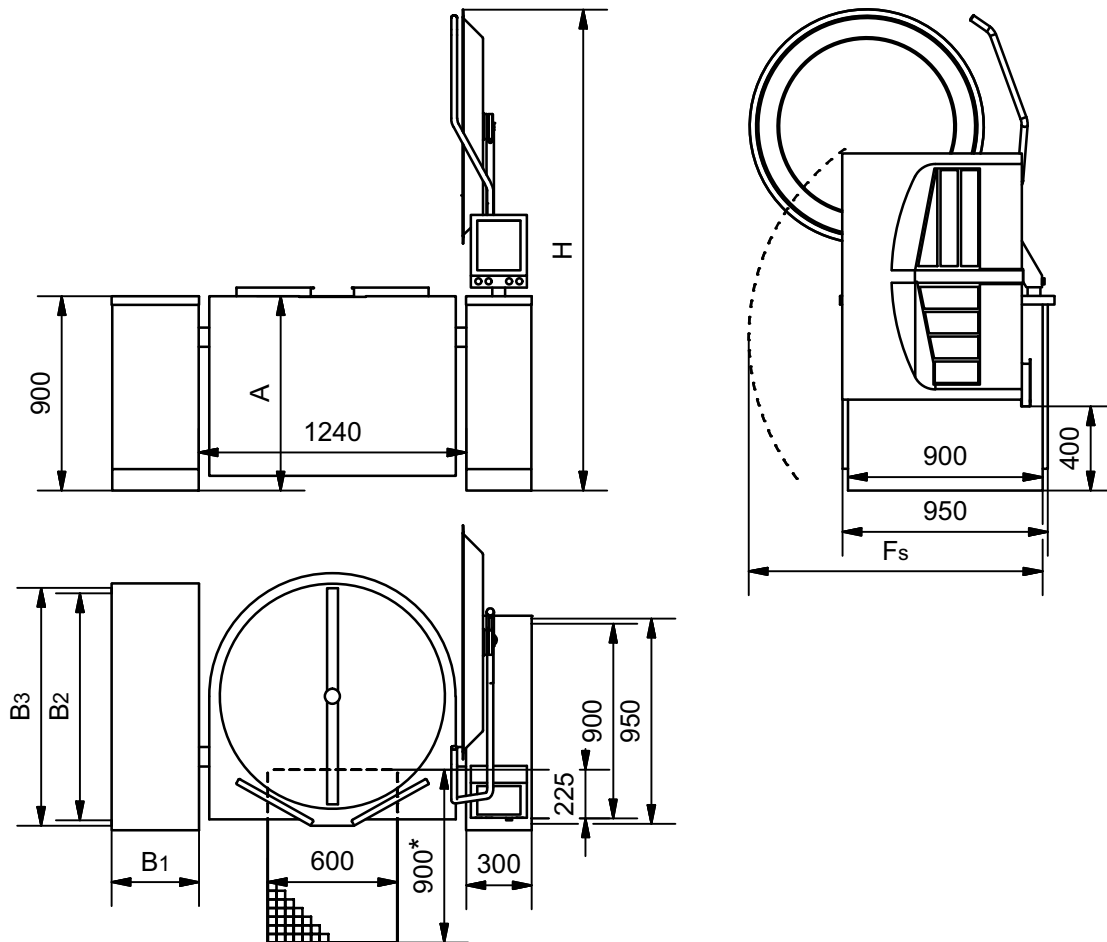
The ice water has to be pumped from the ice bank through the kettle, chilling the food and then returning back to the icebank.

Ice bank, pumps ect. are a precondition for the chilling function.

Heating directly with 1 bar steam pressure and the maximum temperature of 120°C.

Steam supply from an external steam generator, or build in electric steam generator.

Dimensions of the kettle and the mounting pillar



Size	A [mm]	Fs [mm]	H [mm]
MaxiMix 400	900	1450	2240
MaxiMix 500	1017	1450	2350

Fs is the shortest distance to enable service.

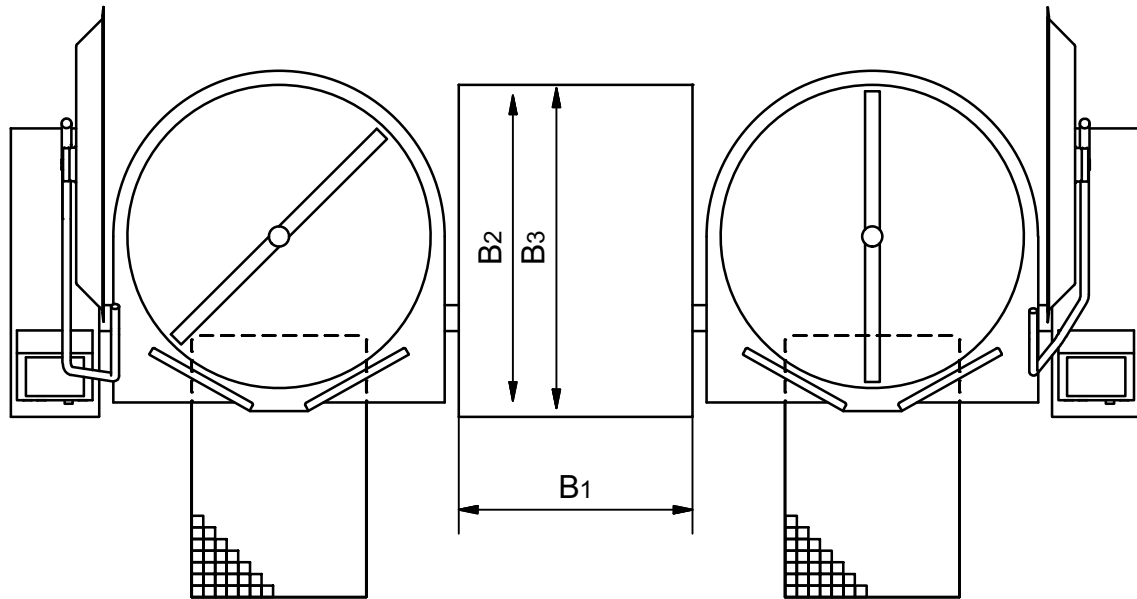
Bigger distance is recommended in consideration of service and the risk of crushing. National/local regulations must always be observed.

**For kettles with butterfly valves or drain valves, the content can run behind the floor drain when tilting with open valve. This can occur e.g. when cleaning.*

It has to be considered to enlarge the drain cf. dimensions in the section 'Location of the drain valve'.

Dimensions of the support pillars for electric heated kettles.

Kettles from the same model can be combined in pairs. The control is mounted in the outer pillars.



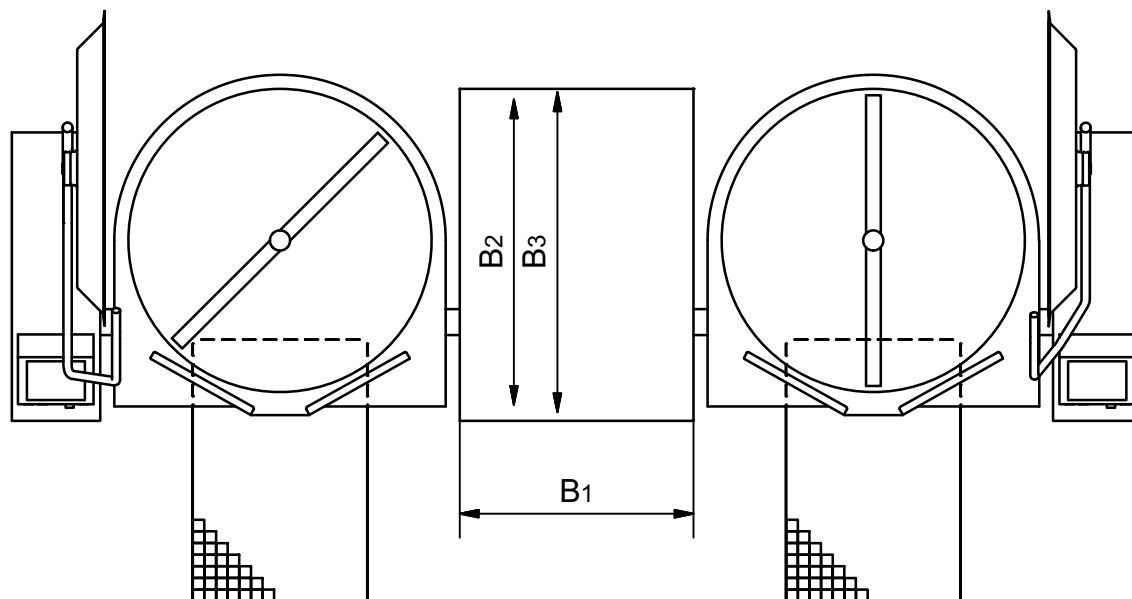
Type	B1 [mm]	B2 [mm]	B3 [mm]	Fs [mm]
One electric heated kettle QuickChill	400	1050	1100	1450
Two electric heated kettles QuickChill	800	1050	1100	1450

Fs is the shortest distance to enable service.

This must be compared with the Fs dimension for the kettle and the biggest Fs dimension must be used.

Dimensions for the support pillars for steam heated kettles

Kettles from the same model can be combined in pairs. The control is mounted in the outer pillars.



Type	B1 [mm]	B2 [mm]	B3 [mm]	Fs [mm]
One steam heated kettle QuickChill	600	1050	1100	1450
Two steam heated kettles QuickChill	1100	1050	1100	1450

Fs is the shortest distance to enable service.

This must be compared with the Fs dimension for the kettle and the biggest Fs dimension must be used.

Electric connection for electric heated kettles

In the users manual there is important information regarding supply and connections.

3~230V+PE, 50/60Hz

Size [l]	Power [kW]	Current consumption [A]	Time to boil 10-90°C [min]	Isc [kA] min/max
400	51	138/138/138	47	0,32/20
500	51	138/138/138	63	0,32/20

Leak current under 1 mA.

3~400V+PE, 50/60Hz

Size [l]	Power [kW]	Current consumption [A]	Time to boil 10-90°C [min]	Isc [kA] min/max
400	63	95/95/95	38	0,25/10
500	63	95/95/95	47	0,25/10

Leak current under 10 mA.



3~440V+PE, 50/60Hz

Size [l]	Power [kW]	Current consumption [A]	Time to boil 10-90°C [min]	Isc [kA] min/max
400	63	87/87/87	38	0,25/6
500	63	87/87/87	47	0,25/6

Leak current under 10 mA.

Electric connection for steam heated kettles.

In the users manual there is important information regarding supply and connections.

3~230V+PE, 50/60Hz

Size [l]	Power [kW]	Current consumption [A]	Isc [kA] min/max
400	3,1	19/19/19	0,25/20
500	3,1	19/19/19	0,25/20

Leak current under 1 mA.

3~400V+PE, 50/60Hz

Size [l]	Power [kW]	Current consumption [A]	Isc [kA] min/max
400	3,1	9/9/9	0,16/10
500	3,1	9/9/9	0,16/10

Leak current under 10 mA.

3~440V+PE, 50/60Hz

Size [l]	Power [kW]	Current consumption [A]	Isc [kA] min/max
400	3,1	9/9/9	0,16/6
500	3,1	9/9/9	0,16/6

Leak current under 10 mA.

Energy efficiency

The kettles have an energy efficiency of 95%, measured by the EFCEM's standard.

The measurements are made with 400V supply, voltage but depending on the actual supply voltage, accessory, size, ect. energy efficiency may differ slightly.

Network

The kettle must be connected to a data network with Internet connection. Use cable category 6 or better.



Water

In the users manual there is important information regarding supply and connections.

Water	Pressure [bar]	Amount [l/min]	Temperature [°C]
Cold	1,5-6	35	-
Hot	1,5-6	35	< 60

Hot water is only used when the kettle is equipped with a spray gun or the possibility to use hot water in the kettle.

Volume

Size [l]	Net [l]	Gross [l]	Diameter [mm]	Depth [mm]
400	400	447	1050	590
500	500	547	1050	707

Weight

Size	Transportation weight* [kg]	Weight in use** [kg]
MaxiMix QuickChill 400 AutoChef 86	698	1261
MaxiMix QuickChill 500 AutoChef 86	736	1399

* 'Transportation weight' includes a support pillar in the same dimensions as the control pillar. The weight is without water in the steam generator and without accessory.

** 'Weight in use' includes a support in the same dimensions as the control pillar, a completely with water filled steam generator and the kettle filled by water to the brim. The weight is without accessory.

Ventilation

3~230V+PE, 50/60Hz

Size [l]	Sensible [W]	Latent [W]	Steam [kg/h]
400	1680	9600	14,1
500	1680	9600	14,1

3~400V+PE / 3~440V+PE, 50/60Hz

Size [l]	Sensible [W]	Latent [W]	Steam [kg/h]
400	2100	12000	17,6
500	2100	12000	17,6

The data is based on the German standard VDI 2052 for dimensioning of ventilation facilities.



*The values are based on experience with an average product and a normal usage, and the actual demand varies by the efficiency of the appliance, the control and the way of use.
The simultaneity factor, which can be found in VDI 2052 is not taken into account.*

Noise

Noise from the machine < 60 dB(A).

Stirrer

Speed of the stirrer: 5 - 140 rpm.

Steam

*In the users manual there is important information regarding supply and connections.
Only for kettles heated by an external steam generator.*

Size [l]	Steam consumption 10-90° (20 min.) [kg/h]
400	227
500	267

Compressed air

In the users manual there is important information regarding supply and connections.

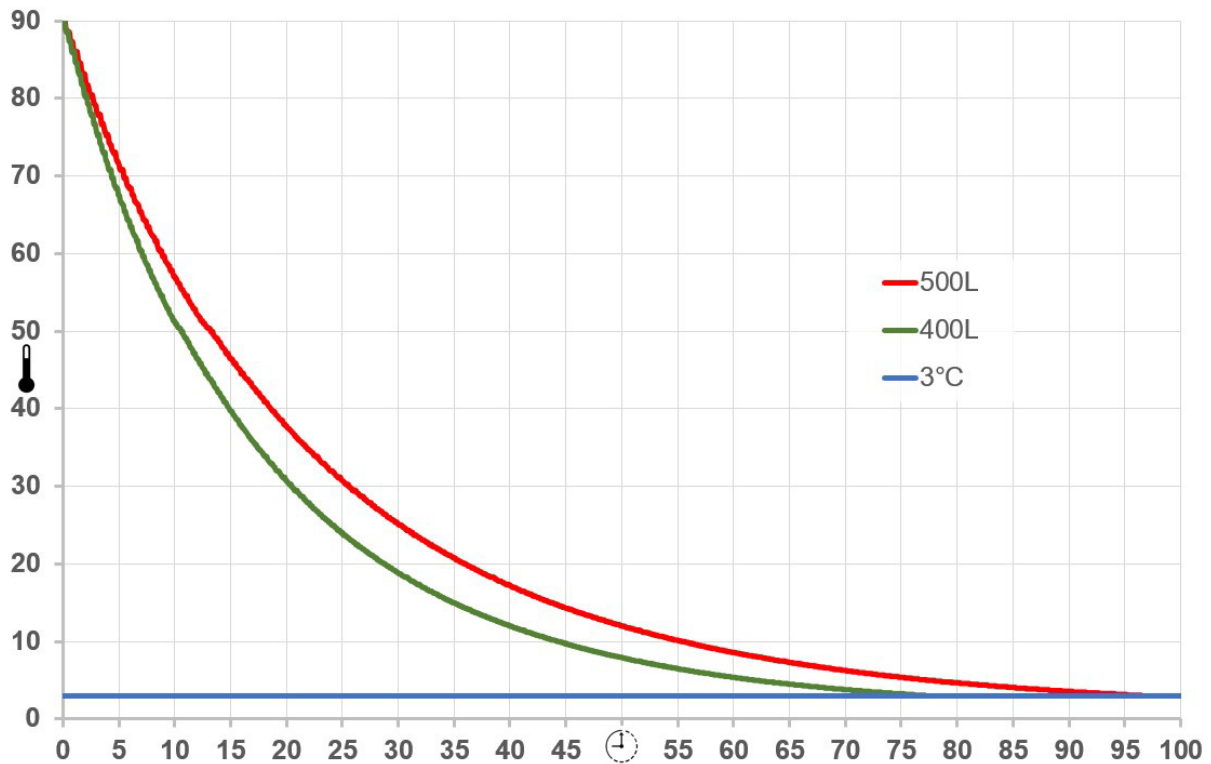
Size	Pressure [bar]	Amount [l/min]
All	7-8	5

The consumption of compressed air is primarily when the kettle is switched on or when switched from chilling to heating. This takes less than 5 minutes.

Chilling times

The data is for chilling a kettle filled with water and with the recommended flow of ice water.
The kettle is chilled with water from an icebank and the water in the kettle is stirred with 15 rpm in a reversing program.

Size [l]	65-10°C [min]	90-10°C [min]	90-3°C [min]
400	38	44	77
500	48	55	96



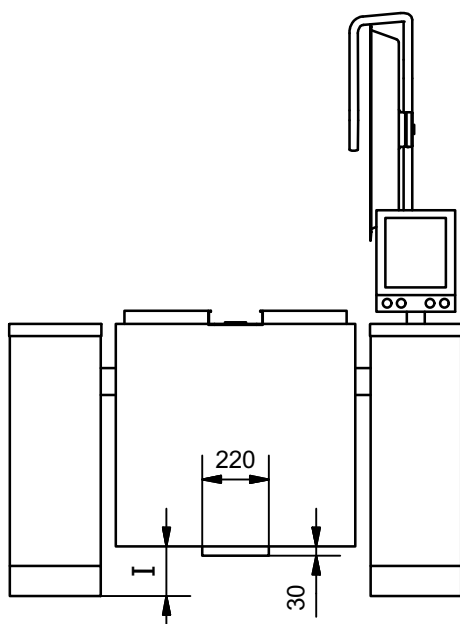
Ice water

In the users manual there is important information regarding supply and connections.

More information regarding dimensioning, choice of ice bank, pipes and pumps is available.

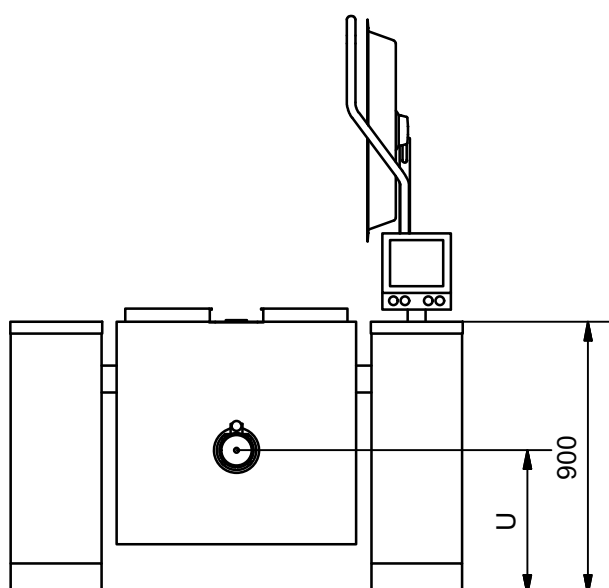
Size [l]	Ice per chilling cycle Electric heated [kg]	Ice per chilling cycle Steam heated [kg]	Flow [l/s]
400	588	539	3,7
500	716	666	3,7

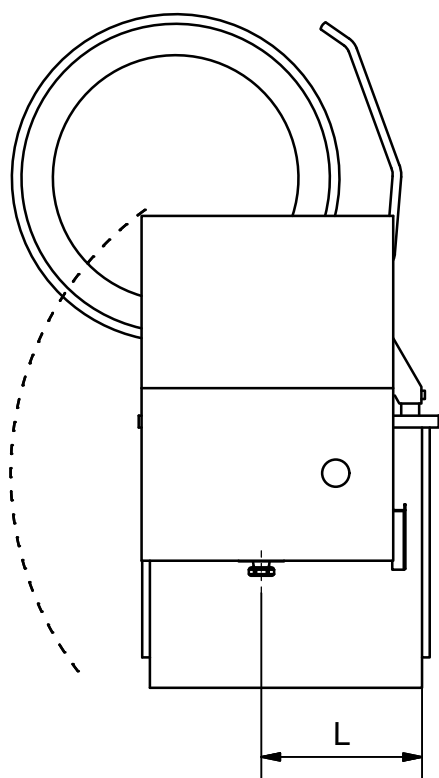
Distance under the kettle



Size [l]	l [mm]
400	65
500	65

Location of the drain valve





Size [l]	L [mm]	U [mm]
400	505	490
500	505	490

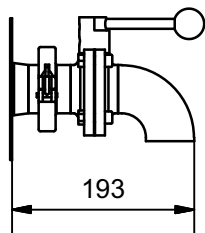
Additional equipment

Butterfly valve with drain downwards

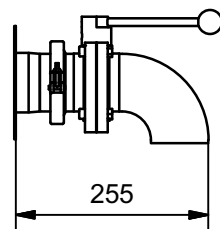
The unit can be dismantled e.g. when cleaning, and a plug to close the pipe when the valves is not mounted is attached.

The angle is welded to the valve, providing a shorter construction.

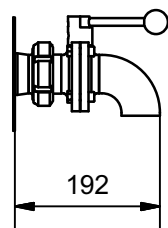
2" ISO Clamp



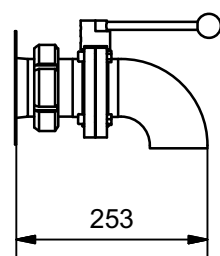
3" ISO Clamp



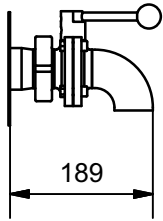
2" SMS



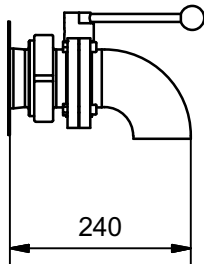
3" SMS



2" DS



3" DS



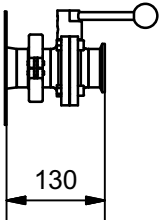
Butterfly valve with connection for a pump

This valve is suitable for connecting a pump to the kettle.

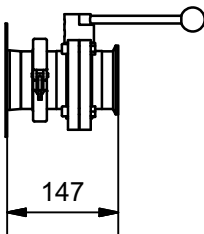
If an angle (accessory) is mounted, the valve can also be used without a pump. e.g. when cleaning.

The unit can be dismantled e.g. when cleaning, and a plug to close the pipe when the valves is not mounted is attached.

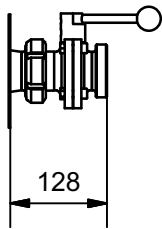
2" ISO Clamp



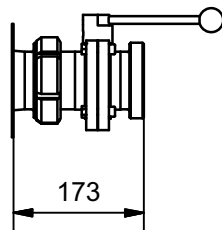
3" ISO Clamp



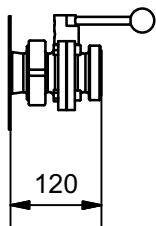
2" SMS



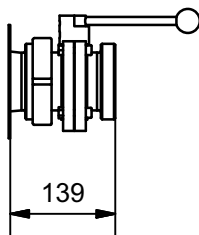
3" SMS



2" DS

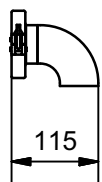


3" DS

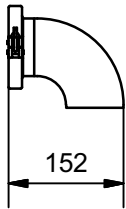


Angles for butterfly valve

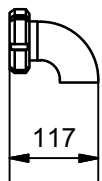
Loose angle for 2" ISO Clamp butterfly valve



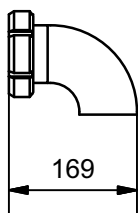
Loose angle for 3" ISO Clamp butterfly valve



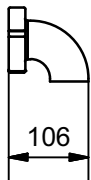
Loose angle for 2" SMS butterfly valve



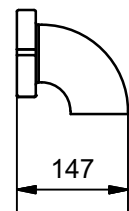
Loose angle for 3" SMS butterfly valve



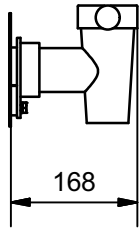
Loose angle for 2" DS butterfly valve



Loose angle for 3" DS butterfly valve

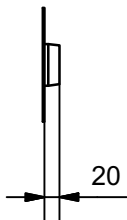


Drain tap, Echtermann type

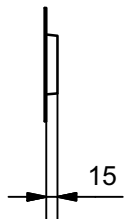


Outlet for customized solution

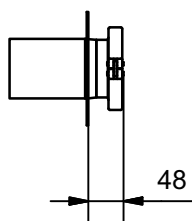
2" outlet



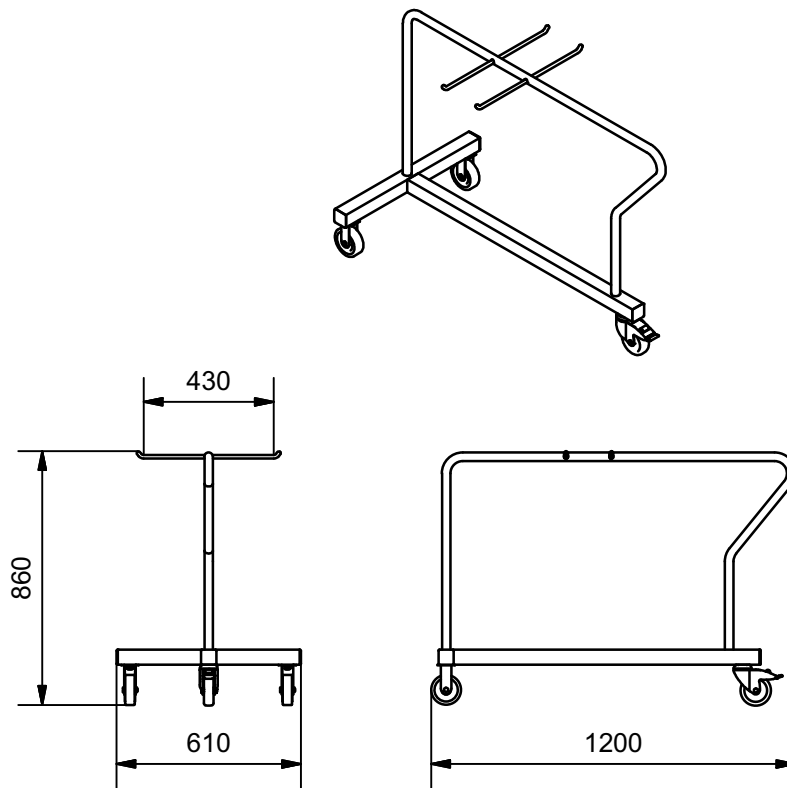
3" outlet



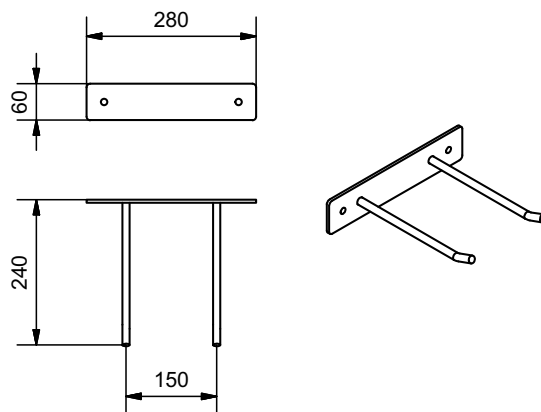
3" outlet with ISO Clamp



Trolley for accessory



Wall bracket for accessory



Jøni A/S reserve our right to alterations. Reservations against misprints.