



## MultiMixBraise Stand AutoChef 86

### *Technical data*

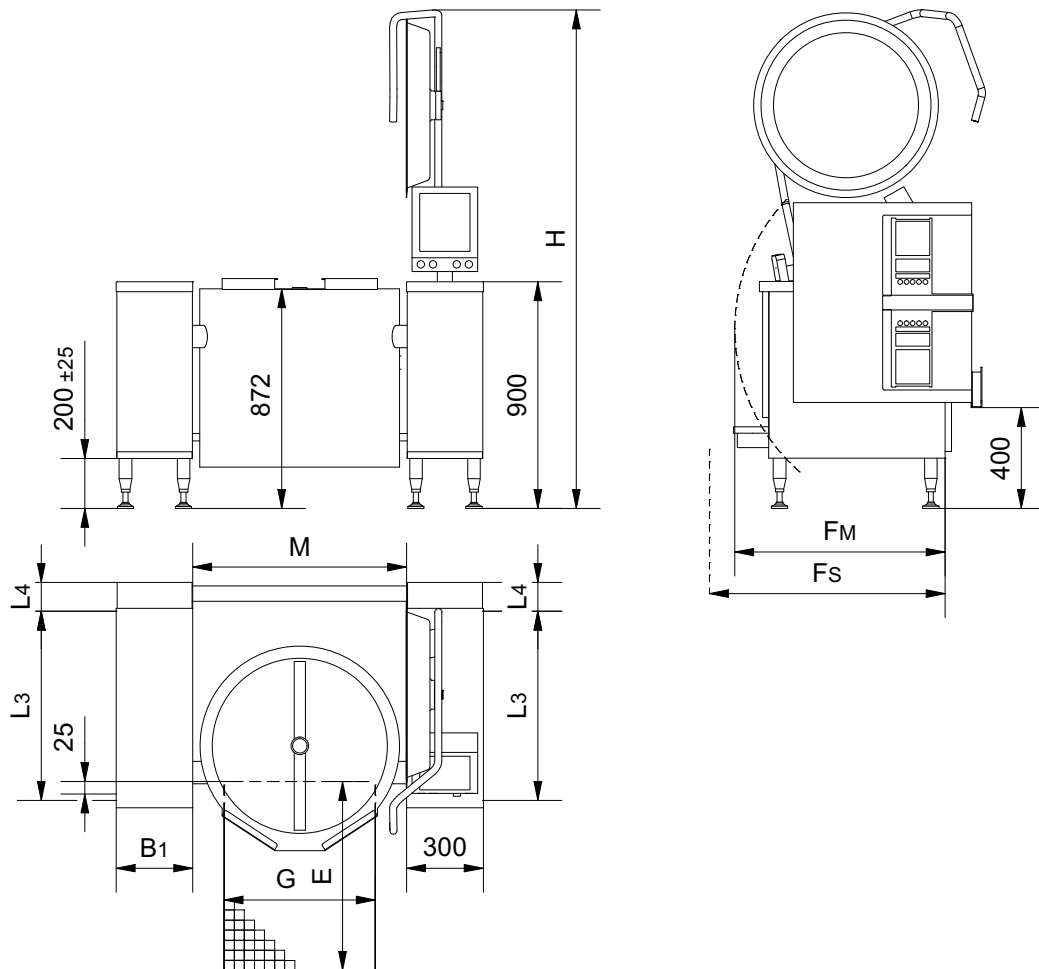
10000047111-TDA-000-02



*The appliance can be shown with some accessory on the photo.*

- Multi Stand, MultiMix Stand and MultiMixBraise Stand can be combined.
- Frying function up to 200°C.
- Boiling function with the option for gentle heating
- The control can be mounted either to the right or to the left of the kettle.

## Dimensions of the kettle and the mounting pillar



Size	L3 [mm]	L4 [mm]	Fm [mm]	Fs [mm]	H [mm]	M [mm]	G [mm]	E* [mm]
MultiMixBraise Stand 75	750	90	840	1055	1810	735	500	800
MultiMixBraise Stand 100	750	90	840	1055	1970	852	600	900
MultiMixBraise Stand 150	750	315	1065	1065	2090	1000	600	900
MultiMixBraise Stand 200	950	140	1090	1200	2130	1100	600	900
MultiMixBraise Stand 300	950	315	1265	1200	2247	1200	600	900

*Fm is the shortest distance to enable tilting the kettle. Fs is the shortest distance to enable service.*

*Bigger distance is recommended in consideration of service and the risk of crushing. National/local regulations must always be observed.*

*If more kettles are connected, all kettles must have the same L3 and L4 as the biggest kettle.*

*\*For kettles with butterfly valves or drain valves, the content can run behind the floor drain when tilting with open valve. This can occur e.g. when cleaning.*

*It is has to be considered to enlarge the drain cf. dimensions in the section 'Location of the drain valve'.*



## Dimensions for the support pillars

Size	B1 [mm]	L3 [mm]
160 x 750 mm*	160	750
160 x 950 mm*	160	950
300 x 750 mm	300	750
300 x 950 mm	300	950

\* 160mm wide pillars cannot be used as support between two kettles.

## Electric connection for Braise-kettles

In the users manual there is important information regarding supply and connections.

**3~400V+PE, 50/60Hz**

Size [l]	Power [kW]	Current consumption [A]	Time to boil 10-90°C [min]	Isc [kA] min/max
75	15,2	26/26/26	38	0,25/10
100	21,5	35/35/35	36	0,32/10
150	32,8	53/53/53	35	0,25/10
200	39,3	62/62/62	39	0,25/10
300	48	75/75/75	47	0,25/10

Leak current under 10 mA.

## Energy efficiency

The Braise kettles have an energy efficiency of 98%, measured according to EFCEM standard.

## Network

The kettle must be connected to a data network with Internet connection. Use cable category 6 or better.

## Water

In the users manual there is important information regarding supply and connections.

Water	Pressure [bar]	Amount [l/min]	Temperature [°C]
Cold	1,5-6	35	-
Hot	1,5-6	35	< 60

Hot water is only used when the kettle is equipped with a spray gun or the possibility to use hot water in the kettle.



## Volume

Size [l]	Net [l]	Gross [l]	Diameter [mm]	Depth [mm]
75	75	91	577	350
100	100	132	694	350
150	150	195	842	350
200	200	244	942	350
300	300	358	1042	420

## Ingress protection class

IPX5

## Ventilation

3~400V+PE, 50/60Hz

Size [l]	Sensible [W]	Latent [W]	Steam [kg/h]
75	532	3040	4,5
100	753	4300	6,3
150	1148	6560	9,6
200	1376	7860	11,6
300	1680	9600	14,1

*The data is based on the German standard VDI 2052 for dimensioning of ventilation facilities.*

*The values are based on experience with an average product and a normal usage, and the actual demand varies by the efficiency of the appliance, the control and the way of use.*

*The simultaneity factor, which can be found in VDI 2052 is not taken into account.*

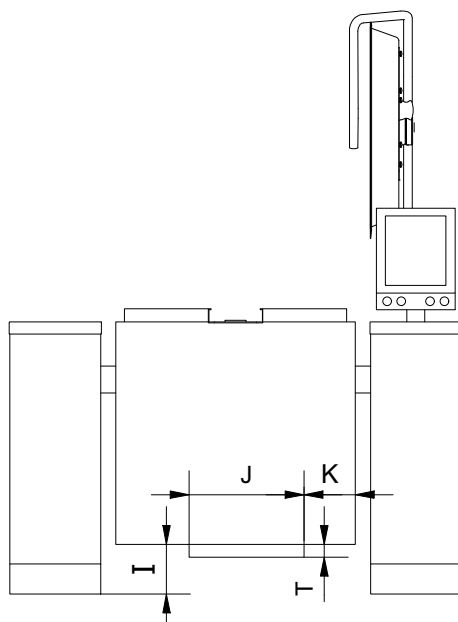
## Noise

Noise from the machine < 60 dB(A).

## Stirrer

Speed of the stirrer: 5 - 125 rpm.

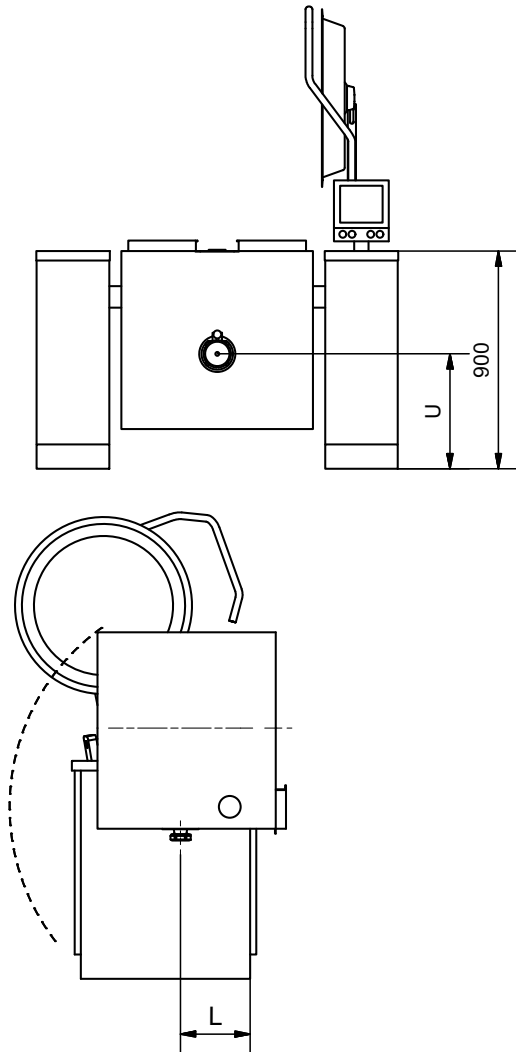
## Distance under the kettle



Size [l]	I [mm]	J [mm]	K [mm]	T [mm]
75	190	380	110	41,5
100	190	380	170	41,5
150	180	485	140	46,5
200	180	485	190	46,5
300	110	485	240	46,5

## Additional equipment

### Location of the drain valve



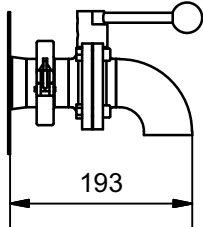
Size [l]	L [mm]	U [mm]
75	200	600
100	200	600
150	200	600
200	200	600
300	270	530

### Butterfly valve with drain downwards

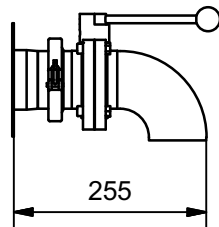
The unit can be dismounted e.g. when cleaning, and a plug to close the pipe when the valves is not mounted is attached.

The angle is welded to the valve, providing a shorter construction.

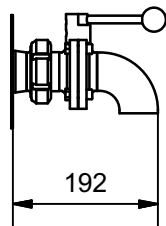
### 2" ISO Clamp



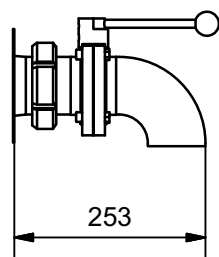
### 3" ISO Clamp



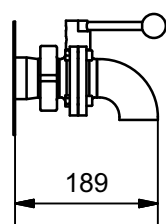
### 2" SMS



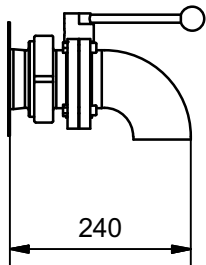
### 3" SMS



### 2" DS



### 3" DS



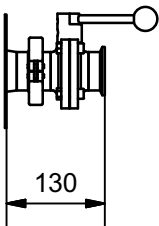
### Butterfly valve with connection for a pump

This valve is suitable for connecting a pump to the kettle.

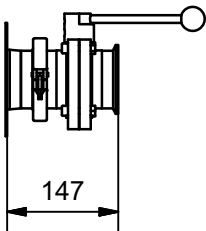
If an angle (accessory) is mounted, the valve can also be used without a pump. e.g. when cleaning.

The unit can be dismantled e.g. when cleaning, and a plug to close the pipe when the valves is not mounted is attached.

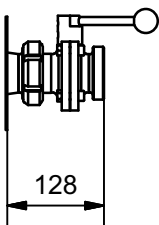
### 2" ISO Clamp



### 3" ISO Clamp

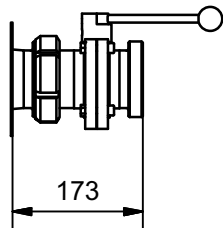


### 2" SMS

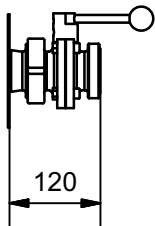




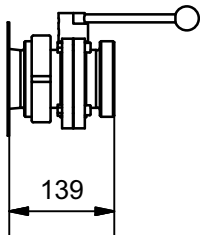
### 3" SMS



### 2" DS

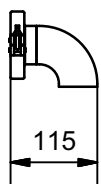


### 3" DS

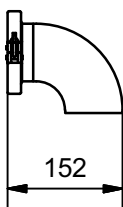


## Angles for butterfly valve

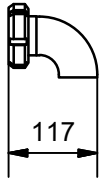
### Loose angle for 2" ISO Clamp butterfly valve



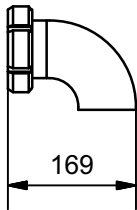
### Loose angle for 3" ISO Clamp butterfly valve



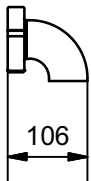
### Loose angle for 2" SMS butterfly valve



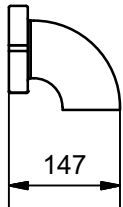
### Loose angle for 3" SMS butterfly valve



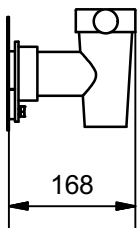
### Loose angle for 2" DS butterfly valve



### Loose angle for 3" DS butterfly valve

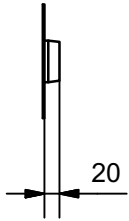


### Drain tap, Echtermann type

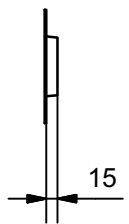


## Outlet for customized solution

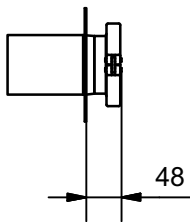
### 2" outlet



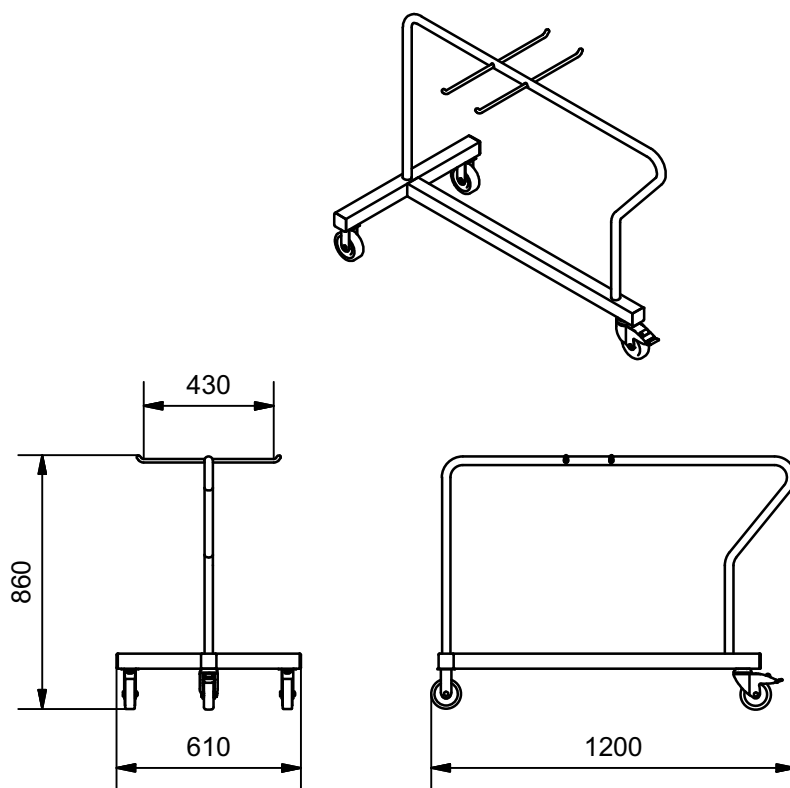
### 3" outlet



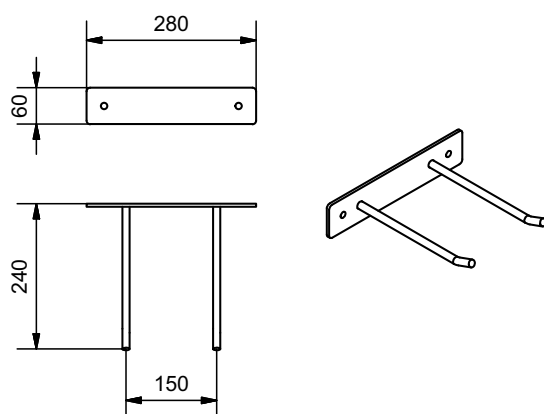
### 3" outlet with ISO Clamp



## Trolley for accessory



## Wall bracket for accessory



Jøni A/S reserve our right to alterations. Reservations against misprints.