



## Mini range model KSF

### *Technical data*

10000011893-DOC-000-02



The cooking zones measures 40x40cm and has 3,8kW ( 3,5kW by 3X230V).



## Table of contents

<b>Mini range model KSF</b> .....	<b>1</b>
Table of contents .....	2
<b>Technical data</b> .....	<b>3</b>
Electric .....	3
3~230V+PE, 50/60Hz .....	3
3~400V+PE, 50/60Hz .....	3
3~440V+PE, 50/60Hz .....	3
Ventilation .....	3
3~230V+PE, 50/60Hz .....	3
3~400V+PE / 3~440V+PE, 50/60Hz .....	3
Ingress protection class .....	4
<b>Dimensions of the product</b> .....	<b>5</b>
KSF 40 .....	5
KSF 40-2 .....	6
<b>Additional equipment</b> .....	<b>7</b>
Fixing to the floor .....	7
<b>Dimensions for installation</b> .....	<b>8</b>
KSF 40 .....	8
KSF 40-2 .....	8

## Technical data

### Electric

In the users manual there is important information regarding supply and connections.

#### 3~230V+PE, 50/60Hz

Type	Zones	Power [kW]	Current consumption [A]
KSF 40	1 x 400x400mm	3,5	15/15/0
KSF 40-2	2 x 400x400mm	7,0	15/15/26

#### 3~400V+PE, 50/60Hz

Type	Zones	Power [kW]	Current consumption [A]
KSF 40	1 x 400x400mm	3,8	10/10/0
KSF 40-2	2 x 400x400mm	7,6	10/16/10

#### 3~440V+PE, 50/60Hz

Type	Zones	Power [kW]	Current consumption [A]
KSF 40	1 x 400x400mm	3,8	9/9/0
KSF 40-2	2 x 400x400mm	7,6	9/15/9

### Ventilation

#### 3~230V+PE, 50/60Hz

Type	Sensible [W]	Latent [W]	Steam [kg/h]
KSF 40	700	280	0,4
KSF 40-2	1400	560	0,8

#### 3~400V+PE / 3~440V+PE, 50/60Hz

Type	Sensible [W]	Latent [W]	Steam [kg/h]
KSF 40	760	304	0,4
KSF 40-2	1520	608	0,9

The data is based on the German standard VDI 2052 for dimensioning of ventilation facilities.



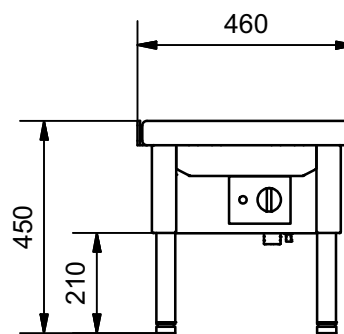
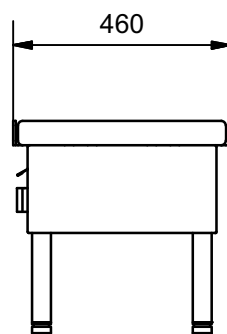
*The values are based on experience with an average product and a normal usage, and the actual demand varies by the efficiency of the appliance, the control and the way of use.  
The simultaneity factor, which can be found in VDI 2052 is not taken into account.*

## **Ingress protection class**

IPX4

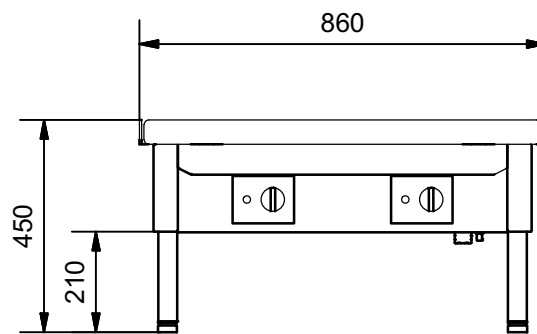
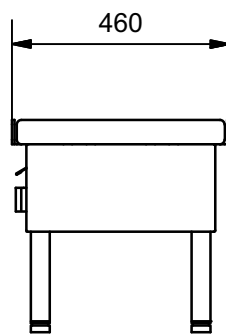
## Dimensions of the product

### KSF 40



See under the paragraph 'Dimensions for installation' about requirements for space around the appliance.

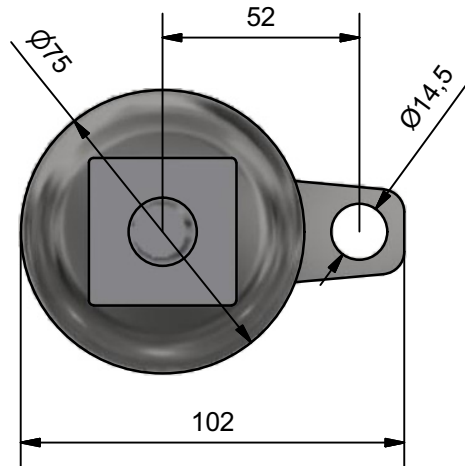
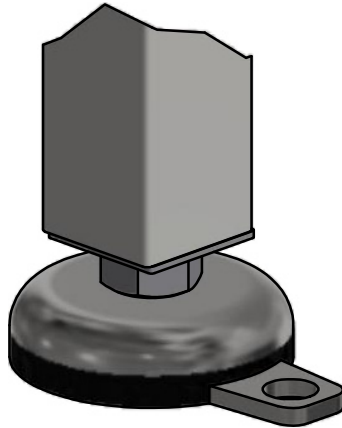
## KSF 40-2



See under the paragraph 'Dimensions for installation' about requirements for space around the appliance.

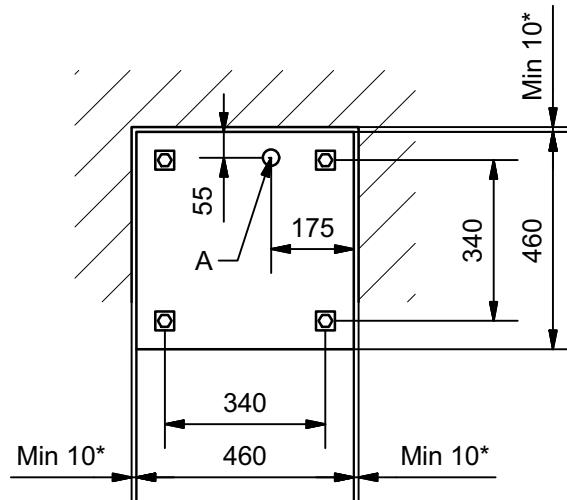
## Additional equipment

### Fixing to the floor



# Dimensions for installation

## KSF 40

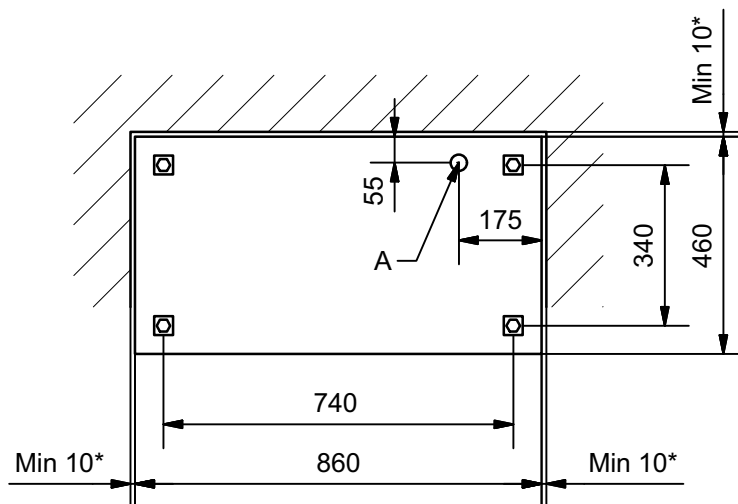


A: Minimum 500mm electrical cable over the floor.

\* Minimum 100mm when placed next to inflammable materials.

For usage and service purposes a 800 mm minimum clearance is required at the front of the range.

## KSF 40-2



A: Minimum 500mm electrical cable over the floor.

\* Minimum 100mm when placed next to inflammable materials.

For usage and service purposes a 800 mm minimum clearance is required at the front of the range.