



OptiMixBraise AutoTemp 56

Technical data

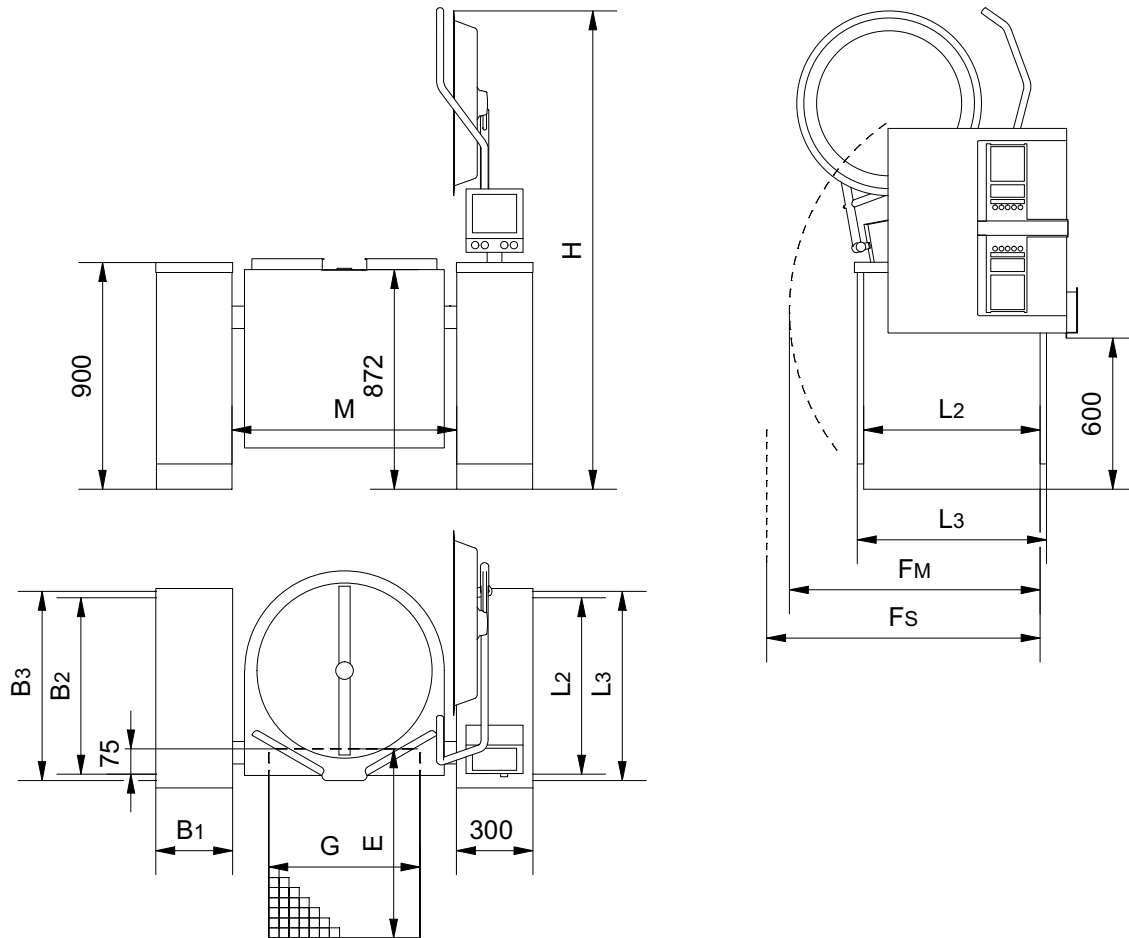
10000047935-TDA-000-02



The appliance can be shown with some accessory on the photo.

- Opti, OptiMix and OptiMix Braise can be combined.
- Frying function up to 200°C.
- Boiling function with the option for gentle heating
- The control can be mounted either to the right or to the left of the kettle.

Dimensions of the kettle and the mounting pillar



| Size | L2/L3 [mm] | Fm [mm] | Fs [mm] | H [mm] | M [mm] | G [mm] | E* [mm] |
|-------------------|---------------|------------|------------|-----------|-----------|-----------|------------|
| OptiMixBraise 75 | 700/750 | 905 | 1055 | 1840 | 775 | 500 | 800 |
| OptiMixBraise 100 | 700/750 | 995 | 1055 | 1940 | 892 | 600 | 900 |
| OptiMixBraise 150 | 700/750 | 1125 | 1125 | 2050 | 1040 | 600 | 900 |
| OptiMixBraise 200 | 700/750 | 1210 | 1210 | 2130 | 1140 | 600 | 900 |
| OptiMixBraise 300 | 700/750 | 1335 | 1335 | 2240 | 1240 | 600 | 900 |

Fm is the shortest distance to enable tilting the kettle. Fs is the shortest distance to enable service.

Bigger distance is recommended in consideration of service and the risk of crushing. National/local regulations must always be observed.

**For kettles with butterfly valves or drain valves, the content can run behind the floor drain when tilting with open valve. This can occur e.g. when cleaning.*

It has to be considered to enlarge the drain cf. dimensions in the section 'Location of the drain valve'.



Dimensions for the support pillars

| Size | B1 [mm] | B2 [mm] | B3 [mm] |
|--------------|------------|------------|------------|
| 80 x 425 mm* | 80 | 425 | - |
| 150 x 300 mm | 150 | 275 | 300 |
| 230 x 550 mm | 230 | 500 | 550 |
| 300 x 550 mm | 300 | 500 | 550 |
| 230 x 750 mm | 230 | 700 | 750 |
| 300 x 750 mm | 300 | 700 | 750 |
| 400 x 750 mm | 400 | 700 | 750 |
| 500 x 750 mm | 500 | 700 | 750 |

* Only for one kettle and maximal 75 L.

Electric connection for Braise-kettles

In the users manual there is important information regarding supply and connections.

3~400V+PE, 50/60Hz

| Size [l] | Power [kW] | Current consumption [A] | Time to boil 10-90°C [min] | Isc [kA] min/max |
|-------------|---------------|----------------------------|----------------------------------|------------------------|
| 75 | 15,2 | 26/26/26 | 38 | 0,25/10 |
| 100 | 21,5 | 35/35/35 | 36 | 0,32/10 |
| 150 | 32,8 | 53/53/53 | 35 | 0,25/10 |
| 200 | 39,3 | 62/62/62 | 39 | 0,25/10 |
| 300 | 48 | 75/75/75 | 47 | 0,25/10 |

Leak current under 10 mA.

Energy efficiency

The Braise kettles have an energy efficiency of 98%, measured according to EFCEM standard.

Network

The kettle must be connected to a data network with Internet connection. Use cable category 6 or better.

Water

In the users manual there is important information regarding supply and connections.

| Water | Pressure [bar] | Amount [l/min] | Temperature [°C] |
|-------|-------------------|-------------------|---------------------|
| Cold | 1,5-6 | 35 | - |
| Hot | 1,5-6 | 35 | < 60 |



Hot water is only used when the kettle is equipped with a spray gun or the possibility to use hot water in the kettle.

Volume

| Size [l] | Net [l] | Gross [l] | Diameter [mm] | Depth [mm] |
|----------|---------|-----------|---------------|------------|
| 75 | 75 | 91 | 577 | 350 |
| 100 | 100 | 132 | 694 | 350 |
| 150 | 150 | 195 | 842 | 350 |
| 200 | 200 | 244 | 942 | 350 |
| 300 | 300 | 358 | 1042 | 420 |

Ingress protection class

IPX5

Ventilation

3~400V+PE, 50/60Hz

| Size [l] | Sensible [W] | Latent [W] | Steam [kg/h] |
|----------|--------------|------------|--------------|
| 75 | 532 | 3040 | 4,5 |
| 100 | 753 | 4300 | 6,3 |
| 150 | 1148 | 6560 | 9,6 |
| 200 | 1376 | 7860 | 11,6 |
| 300 | 1680 | 9600 | 14,1 |

The data is based on the German standard VDI 2052 for dimensioning of ventilation facilities.

The values are based on experience with an average product and a normal usage, and the actual demand varies by the efficiency of the appliance, the control and the way of use.

The simultaneity factor, which can be found in VDI 2052 is not taken into account.

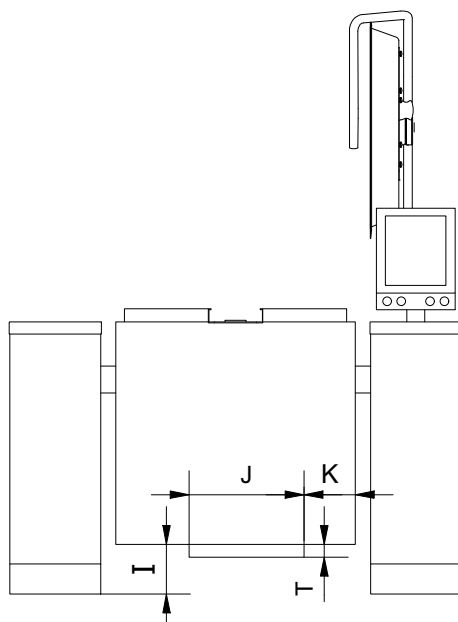
Noise

Noise from the machine < 60 dB(A).

Stirrer

Speed of the stirrer: 5 - 125 rpm.

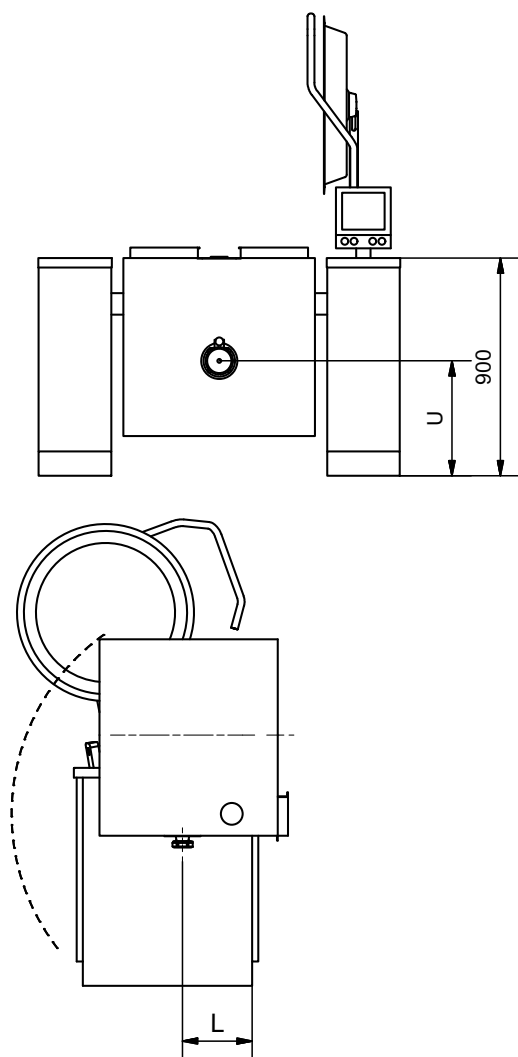
Distance under the kettle



| Size [l] | I [mm] | J [mm] | K [mm] | T [mm] |
|-------------|-----------|-----------|-----------|-----------|
| 75 | 190 | 380 | 110 | 41,5 |
| 100 | 190 | 380 | 170 | 41,5 |
| 150 | 180 | 485 | 140 | 46,5 |
| 200 | 180 | 485 | 190 | 46,5 |
| 300 | 110 | 485 | 240 | 46,5 |

Additional equipment

Location of the drain valve



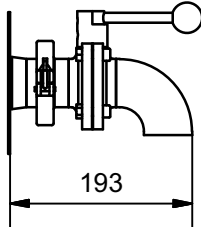
| Size [l] | L [mm] | U [mm] |
|-------------|-----------|-----------|
| 75 | 200 | 600 |
| 100 | 200 | 600 |
| 150 | 200 | 600 |
| 200 | 200 | 600 |
| 300 | 270 | 530 |

Butterfly valve with drain downwards

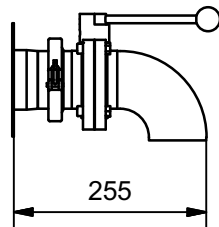
The unit can be dismounted e.g. when cleaning, and a plug to close the pipe when the valves is not mounted is attached.

The angle is welded to the valve, providing a shorter construction.

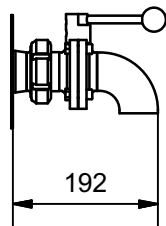
2" ISO Clamp



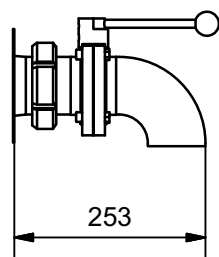
3" ISO Clamp



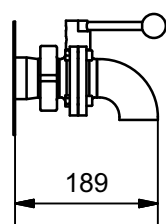
2" SMS



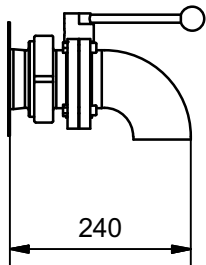
3" SMS



2" DS



3" DS



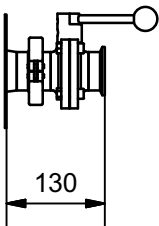
Butterfly valve with connection for a pump

This valve is suitable for connecting a pump to the kettle.

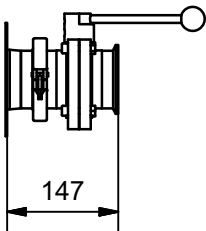
If an angle (accessory) is mounted, the valve can also be used without a pump. e.g. when cleaning.

The unit can be dismantled e.g. when cleaning, and a plug to close the pipe when the valves is not mounted is attached.

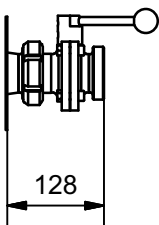
2" ISO Clamp



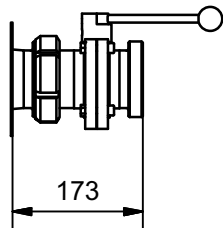
3" ISO Clamp



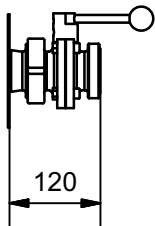
2" SMS



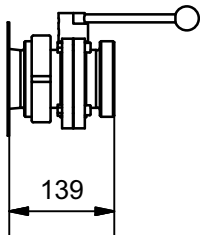
3" SMS



2" DS

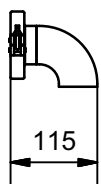


3" DS

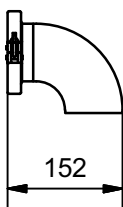


Angles for butterfly valve

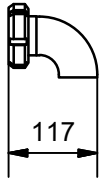
Loose angle for 2" ISO Clamp butterfly valve



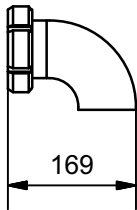
Loose angle for 3" ISO Clamp butterfly valve



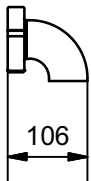
Loose angle for 2" SMS butterfly valve



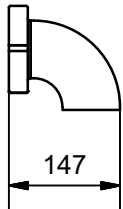
Loose angle for 3" SMS butterfly valve



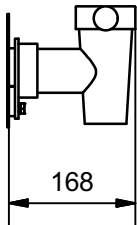
Loose angle for 2" DS butterfly valve



Loose angle for 3" DS butterfly valve

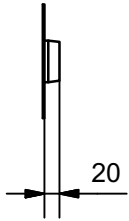


Drain tap, Echtermann type

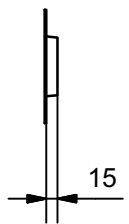


Outlet for customized solution

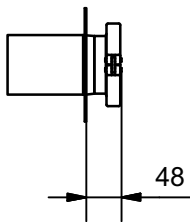
2" outlet



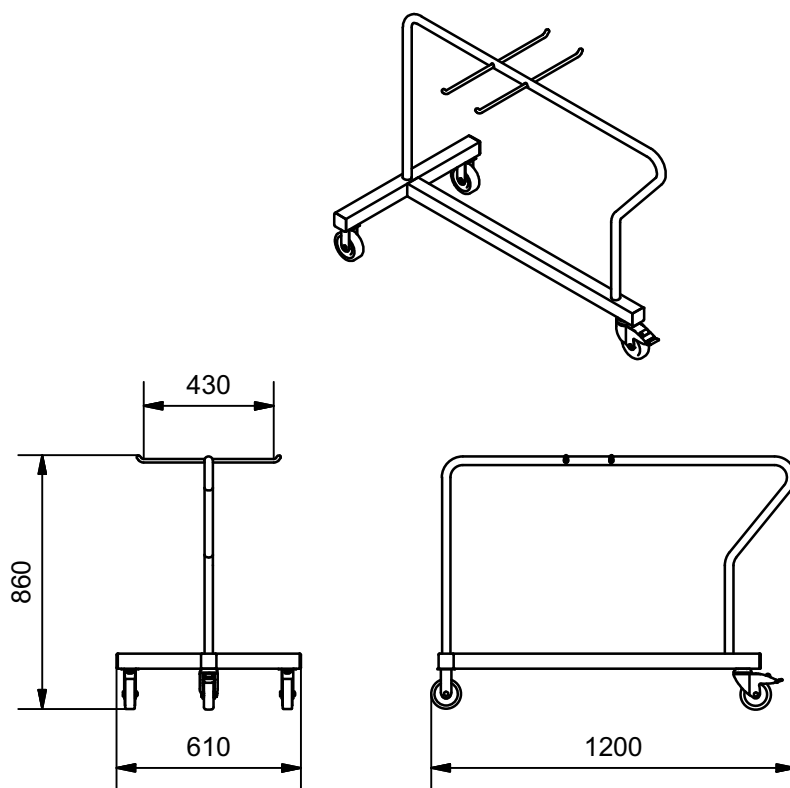
3" outlet



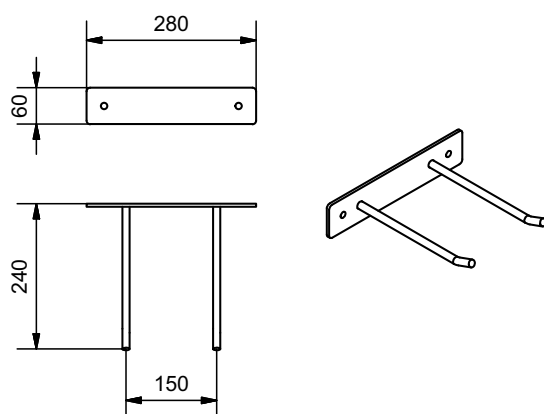
3" outlet with ISO Clamp



Trolley for accessory



Wall bracket for accessory



Jøni A/S reserve our right to alterations. Reservations against misprints.